

# Service in New Orleans

## Facts not Folklore



Col Jason E. Burkett  
CO HQBN MARFORRES and MARFORSOUTH  
Commander Marine Corps Support Facility New Orleans



# AGENDA

---

- ✦ Professional Impacts and Opportunities
- ✦ NOLA Experience Video
- ✦ Quality of Life
- ✦ Housing Opportunities and Options
- ✦ Regional Schools
- ✦ Regional Crime Considerations





# Professional Impacts and Opportunities

## Promotion Implications

Active Component and Active Reserve Officers and SNCOs who serve a tour in NOLA have promotion rates comparable to those who haven't served in NOLA (all are w/in +/- 10 percentage points).



## Professional Opportunities

Service in NOLA provides:

- ✦ MARFOR (MARFORRES / MARFORSOUTH) and MSC Level experience opportunities.
- ✦ Myriad opportunities to plan and execute real-world operations in the SOUTHCOM AOR.
- ✦ AC/RC Total Force integration and employment is the Service reality – now and in the foreseeable future.







# NOLA Experience Video

---



Greater New Orleans: That Happens Here

Video Link: <https://vimeo.com/713917498/a523894fa2>





# Quality of Life

## Near Limitless Things to Do

- ✦ Unrivaled vibrant cultural experience; music, food, history, art, people, etc.
- ✦ Constant festivals/events; Jazz & Heritage Fest, Mardi Gras, French Quarter Fest, Bayou Boogaloo, etc.
- ✦ Multiple world-renowned Museums; World War II Museum, New Orleans Museum of Art, Ogden Museum of Southern Art, LA Children's Museum, etc.
- ✦ Assorted outdoor/sportsman opportunities; fishing, hunting, cycling, running, etc.
- ✦ City Zoo, Aquarium of the Americas, New Orleans Botanical Gardens, etc.
- ✦ Several State and City parks
- ✦ Professional sports; Saints, Pelicans, NOLA Gold Rugby
- ✦ 300+ year old city with countless historic experiences; St Louis Cathedral, Jackson Square, Christ Church Cathedral, multiple historic cemeteries, etc.







# Quality of Life (Cont.)

Near Limitless Things to Do







# Housing Opportunities and Options

## Housing Options as Eclectic as New Orleans Itself

### ✦ Communities for every taste

- ✦ On-base/Patrician Mtg Properties (both on Fed City and Belle Chasse)
- ✦ Small historic neighborhoods more than a 100 years old
- ✦ New, modern (and still developing) neighborhoods
- ✦ Waterfront (lakefront and riverfront) properties
- ✦ Gated communities
- ✦ Industrial condos
- ✦ Sprawling properties in wooded areas
- ✦ More info on individual regional neighborhoods/portions of the city is available by clicking [here](#)







# Regional Schools

## Many Educational Options!

- ✦ NOLA has 355 schools collectively offering Pre-K through High School education.
  - ✦ 38 “A” Rated Elementary Schools
  - ✦ 27 “A” Middle Schools
  - ✦ 27 “A” Rated High Schools
- ✦ Two DoD Affiliated Schools! (**details on next slides**)
- ✦ While many public schools in the NOLA area are below average; however, there are several good ones, and the public schools have improved dramatically post-Katrina.
- ✦ Several Charters are nationally ranked; Examples:
  - ✦ Pat Taylor Science and Tech Academy; Top 1% (#37th best public high school in the nation)
  - ✦ Benjamin Franklin High School; Top 1%
  - ✦ Haynes Academy for Advanced Studies; Top 1%
- ✦ Many private schools among the country’s best:
  - ✦ 20 “A” Rated Private High Schools
  - ✦ Located throughout the greater NOLA region
- ✦ Nine Colleges in NOLA Including; Tulane University, Loyola University, Xavier University, University of Holy Cross, Dillard University, University of New Orleans

253	174	168	79	4	108	243	355
Preschools	Elementary Schools	Middle Schools	High Schools	Public District Schools	Public Charter Schools	Private Schools	Total Schools







# Regional DoD Schools for Dependents

## Belle Chasse Academy

Located aboard Naval Air Station/Joint Reserve Base (NAS/JRB), Belle Chasse

- ✦ Kindergarten through 8<sup>th</sup> Grade
- ✦ “A” Rated School by Louisiana Dept of Education
- ✦ No tuition
- ✦ Modern 123,000 sq ft facility w/900+ students
- ✦ Dependents of military members receive priority placement
- ✦ Multiple school bus pick-up points including immediately outside the MCSF fence line.
- ✦ Website: [Home - About Us - Belle Chasse Academy](#)





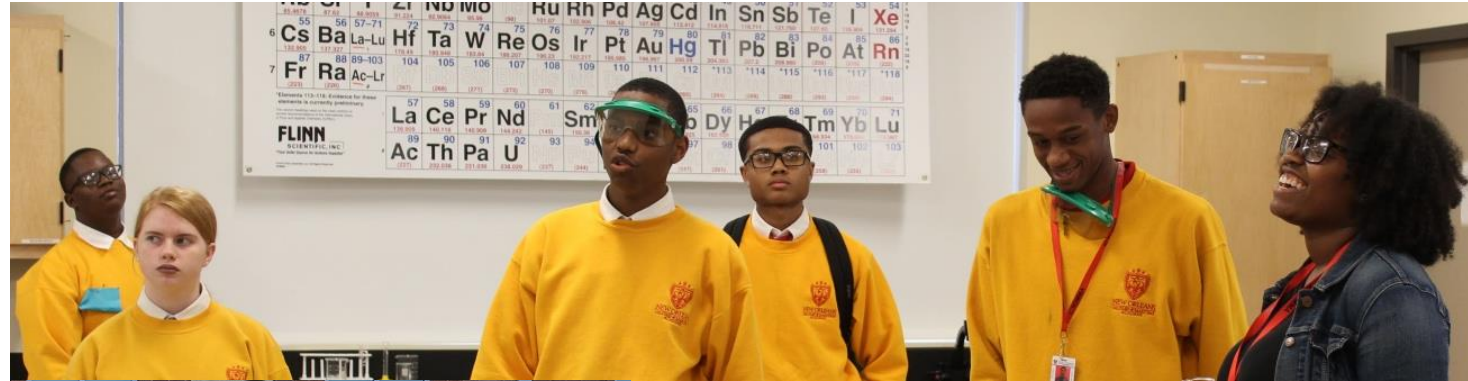


# Regional DoD Schools for Dependents

## New Orleans Military & Maritime Academy (NOMMA)

Located Immediately adjacent to the Marine Corps Support Facility

- ✦ 8<sup>th</sup> through 12<sup>th</sup> Grades
- ✦ Type-2 Public Charter School (tuition free)
- ✦ Rigorous college preparatory curriculum, as well as career and technical education, to prepare students for future success and to accept the responsibilities of citizenship
- ✦ 100% of students participate in JROTC
- ✦ Myriad of extracurricular activities including multiple sports teams, robotics, sailing, etc.
- ✦ Extensive special education resources
- ✦ Dependents of Military Members receive priority placement
- ✦ Multiple School bus pick-up locations
- ✦ Website: [New Orleans Military & Maritime Academy \(nomma.net\)](http://nomma.net)



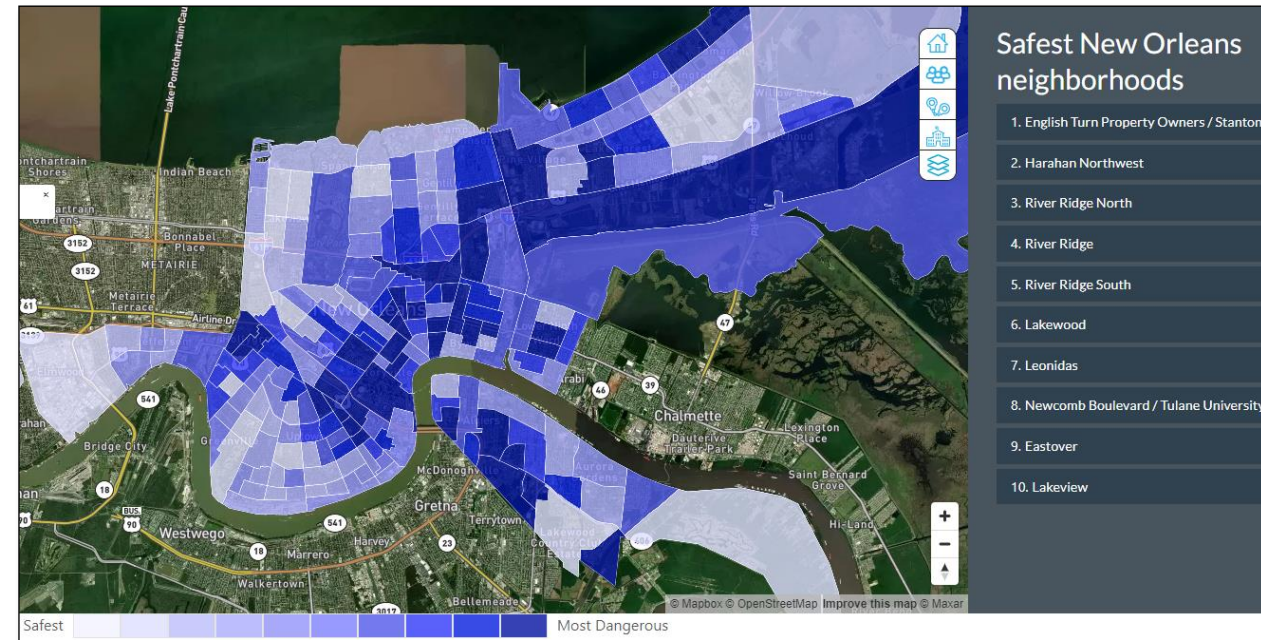




# Regional Crime Considerations

## Crime in NOLA is Concerning; However:

- ✦ Most criminal activity in NOLA is focused on:
  - ✦ Drug and gang related activities
  - ✦ Centralized in specific troubled areas in the region
  - ✦ Taking advantage of regional tourists' naivety and tendency to be under the influence of intoxicants
- ✦ Similar to other major US cities, NOLA has implemented multiple recent initiatives to better get regional criminal activity under control. These include:
  - ✦ New interim NOPD Superintendent (Dec 22) and multiple initiatives to fill NOPD officer vacancies
  - ✦ Consent Decree with the DOJ to Reform the NOPD
  - ✦ 9 Crime Prevention Programs, and extensive NOPD community involvement & Outreach Programs.
  - ✦ With very few exceptions, the members who work aboard the Marine Corps Support Facility and their families have NOT historically been directly impacted by regional violent crime.
- ✦ Threat mitigations (staying in groups, being aware of/avoiding high crime areas, vigilance, etc.) has generally deterred criminals from targeting our members and enabled NOLA to be a similar experience to other major cities.
- ✦ Issues that have impacted our members have included petty crime and vehicle break-ins and thefts.







# BACK UP SLIDES







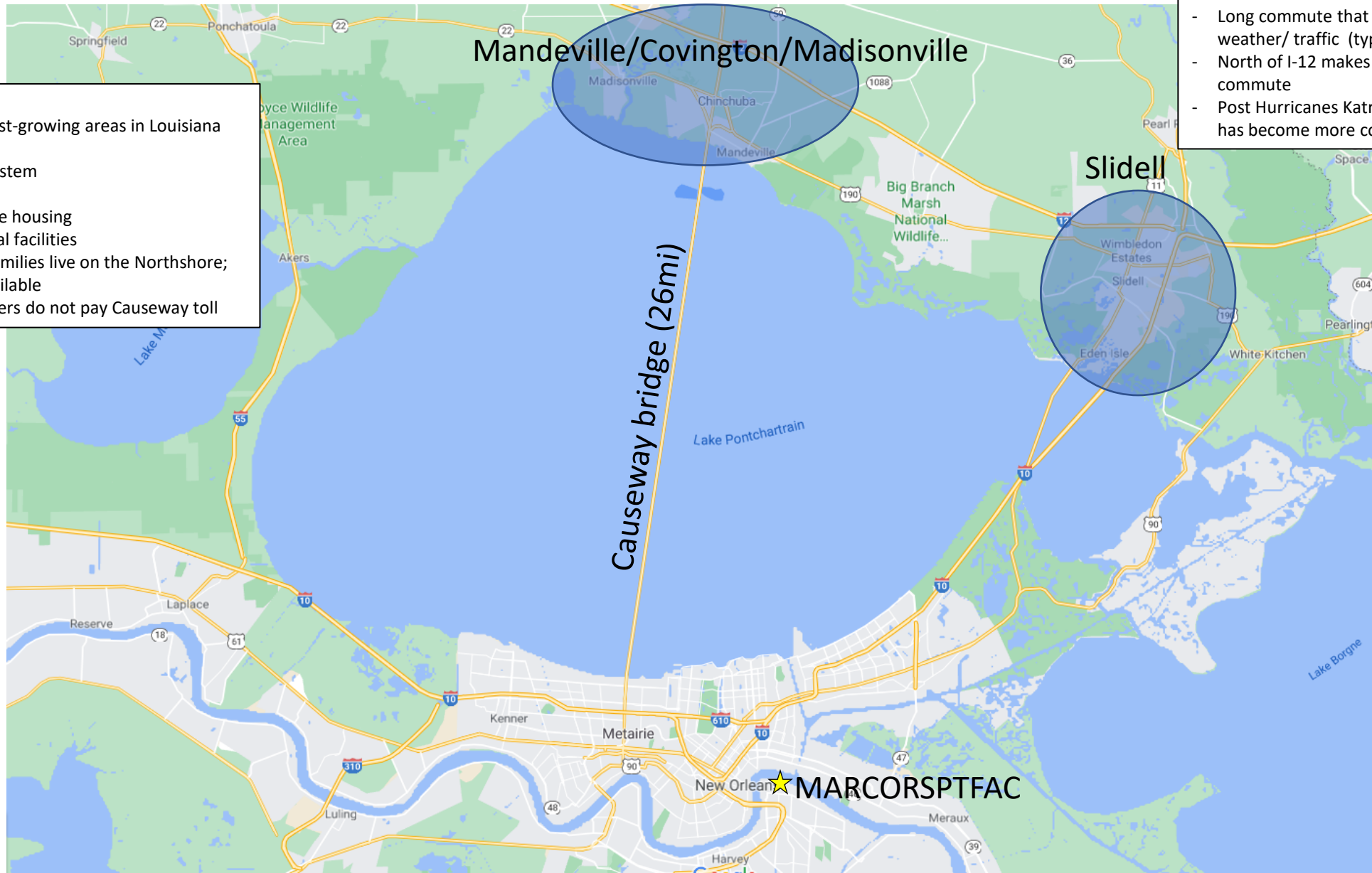
# North Shore

## PROS

- One of the fastest-growing areas in Louisiana
- Family friendly
- Strong school system
- Low crime rate
- Larger affordable housing
- First-rate medical facilities
- Many military families live on the Northshore; carpools are available
- \*Military members do not pay Causeway toll

## CONS

- Long commute that can be affected by weather/ traffic (typical 40min-1hr)
- North of I-12 makes an even longer commute
- Post Hurricanes Katrina and Ida this area has become more congested



[Click to Return to the Brief](#)





# Algiers Point

## PROS

- Very close to work
- Same amazing architecture as East Bank/Garden Dist
- Very quiet and relatively safe
  - Most people know each other
- Pedestrian ferry to French Quarter/Downtown

## CONS

- Area outside the box tends to have higher crime rates
- Somewhat limited options for food/nightlife



[Click to Return to the Brief](#)





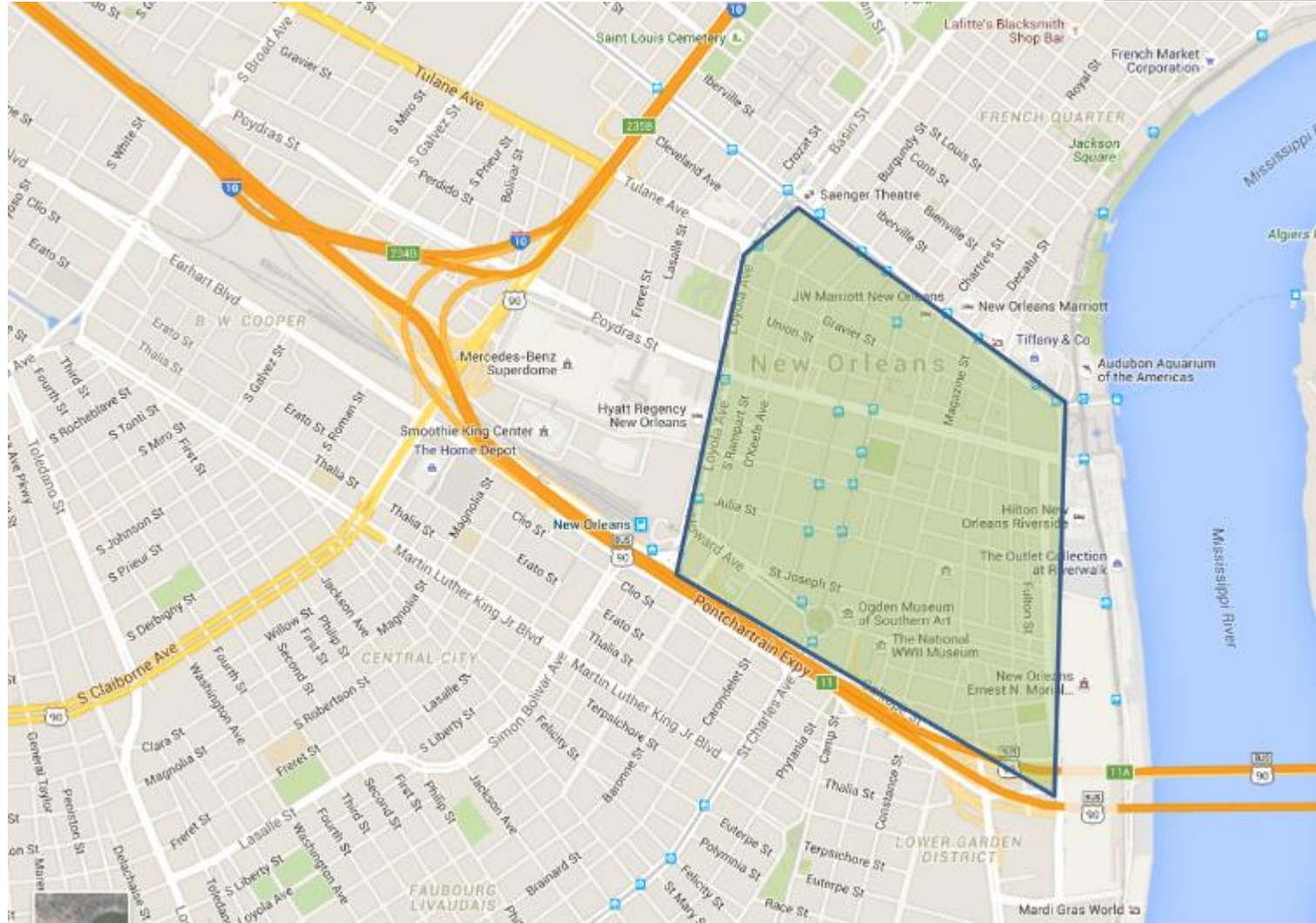
## CBD/ WAREHOUSE DISTRICT

### PROS

- In the heart of everything with unlimited local events
- Lots of restaurants/bars/music in walking distance
- Moderately safe

### CONS

- Principally condos and apartments
- Not generally family focused
- Relatively expensive



[Click to Return to the Brief](#)





# LOWER GARDEN DISTRICT

- PROS**
- Easy commute to the Support Facility.
  - Beautiful and historic architecture
  - Typically quiet and relatively safe
  - Walking distance from many venues.



- CONS**
- Home prices are on the rise.
  - Criminal activity in the periodically in the region.

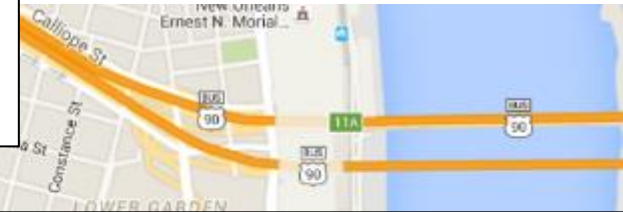
[Click to Return to the Brief](#)





## GARDEN DISTRICT

- Amazing historic homes
- This is where many celebrities/ socialites live
- Safer
- Can be expensive



## TOURO

More family friendly, though has some rough pockets closer to the river  
Lots of shopping/restaurants in walking distance  
Decent public transportation  
Mix of blue/white collar families

## IRISH CHANNEL

- Moderately family friendly
- Most neighbors know each other
- If you want local, this is a great neighborhood
- Historically blue-collar neighborhood
  - Has some rough pockets near river
- Lots of shops/restaurants/bars in walking distance
- Older locals and some college kids



[Click to Return to the Brief](#)





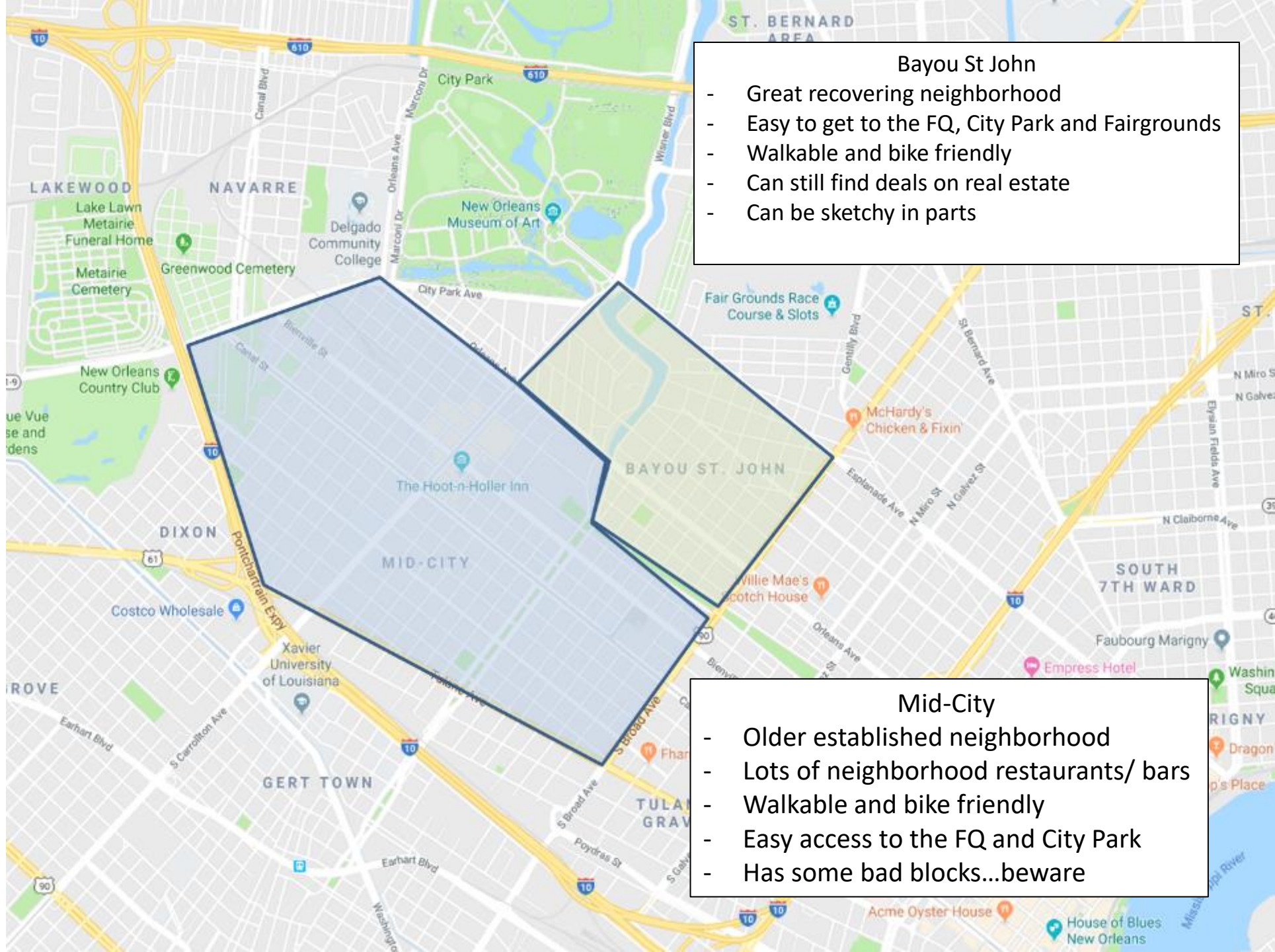
## UPTOWN/ BLACK PEARL

- Very family friendly and usually safe
- Close to many private schools
- Plenty of shopping/ restaurants/nightlife in walking distance
- Close to the zoo/Audubon Park/The Fly
- Has gotten expensive
- Commute is ~20min in the AM and ~35min in the PM
- Mostly older professionals with kids



[Click to Return to the Brief](#)





### Bayou St John

- Great recovering neighborhood
- Easy to get to the FQ, City Park and Fairgrounds
- Walkable and bike friendly
- Can still find deals on real estate
- Can be sketchy in parts

### Mid-City

- Older established neighborhood
- Lots of neighborhood restaurants/ bars
- Walkable and bike friendly
- Easy access to the FQ and City Park
- Has some bad blocks...beware

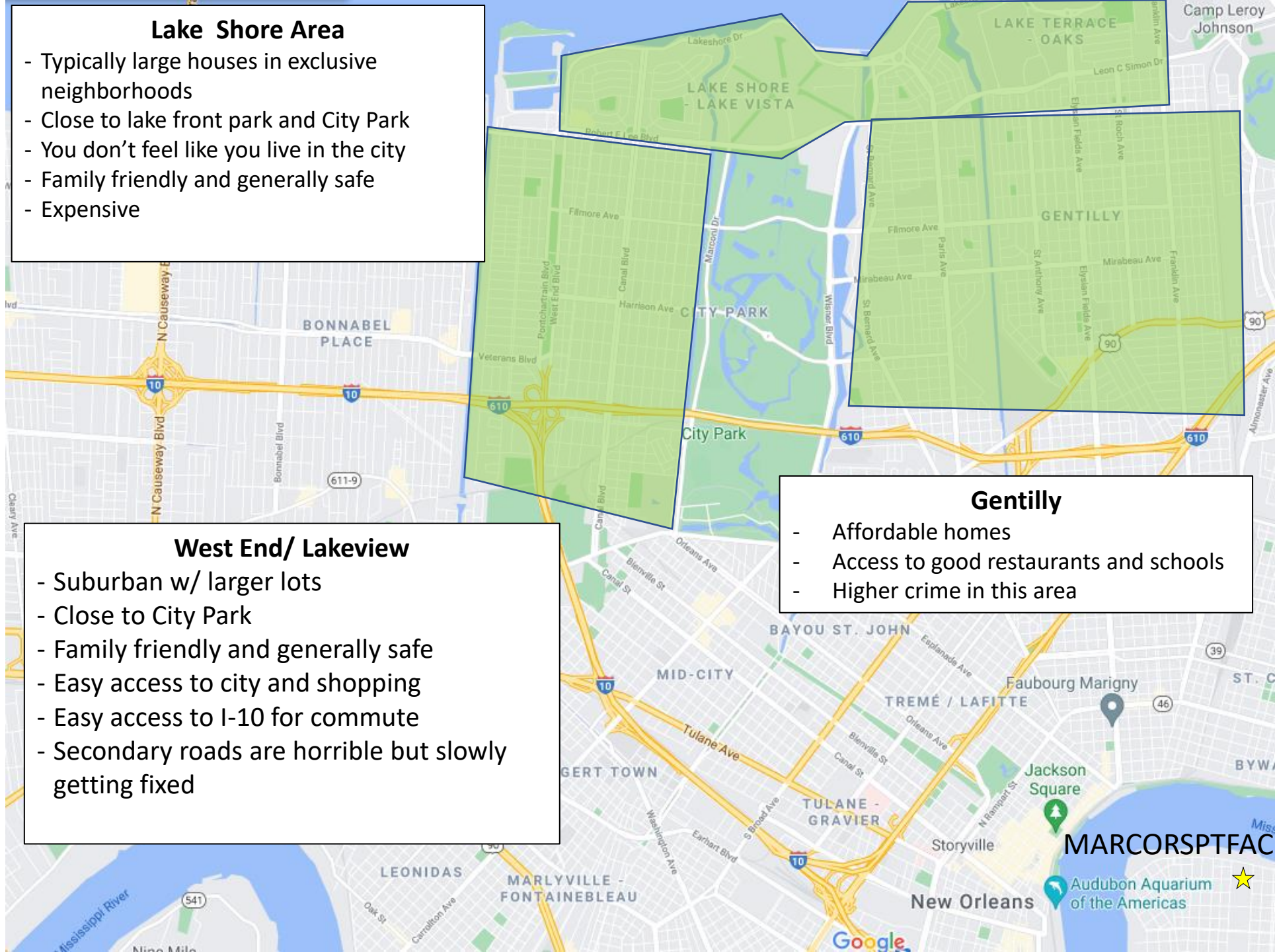
[Click to Return to the Brief](#)





### Lake Shore Area

- Typically large houses in exclusive neighborhoods
- Close to lake front park and City Park
- You don't feel like you live in the city
- Family friendly and generally safe
- Expensive



### West End/ Lakeview

- Suburban w/ larger lots
- Close to City Park
- Family friendly and generally safe
- Easy access to city and shopping
- Easy access to I-10 for commute
- Secondary roads are horrible but slowly getting fixed

### Gentilly

- Affordable homes
- Access to good restaurants and schools
- Higher crime in this area

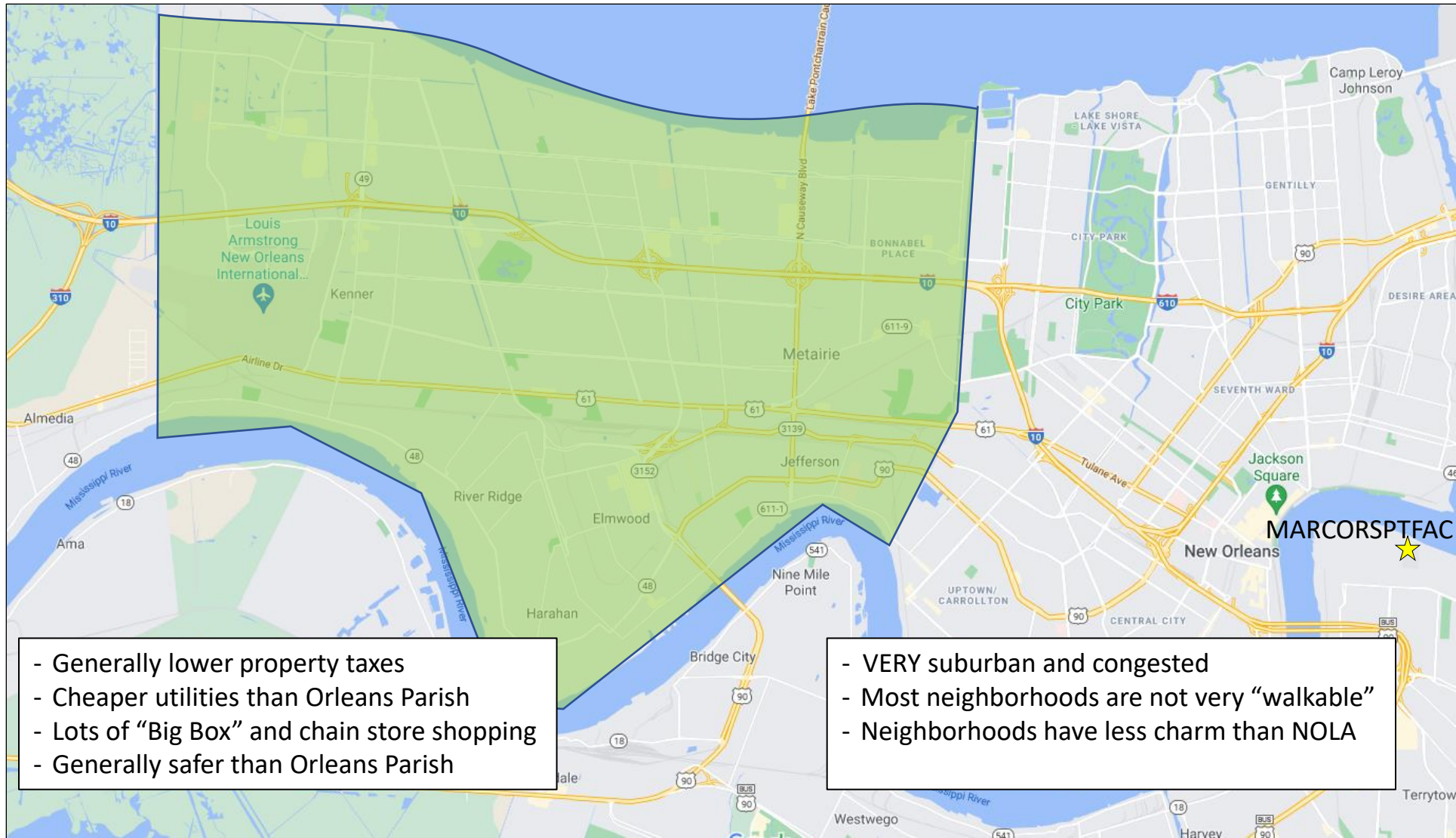
[Click to Return to the Brief](#)





# Jefferson Parish

Metairie/ Old Metairie/ Kenner/ River Ridge/ Harahan



- Generally lower property taxes
- Cheaper utilities than Orleans Parish
- Lots of “Big Box” and chain store shopping
- Generally safer than Orleans Parish

- VERY suburban and congested
- Most neighborhoods are not very “walkable”
- Neighborhoods have less charm than NOLA

[Click to Return to the Brief](#)





# Belle Chasse and English Turn



[Click to Return to the Brief](#)

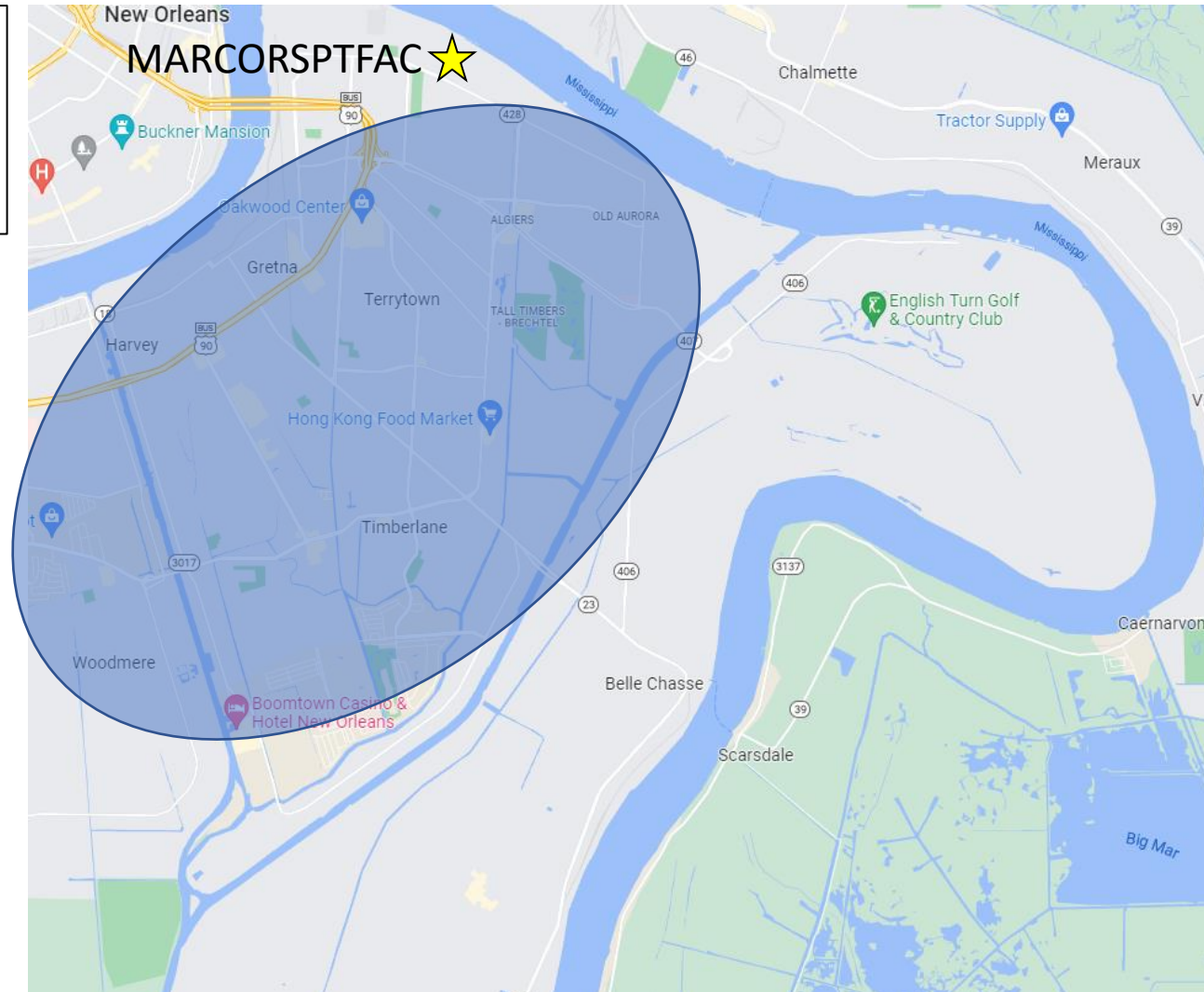




# Gretna and Larger Westbank

## PROS

- Close to MARCORSPTFAC and NAS JRB New Orleans
- Belle Chasse Academy and Belle Chasse HS are good schools readily available
- Many cost-effective Options



## CONS

- Need to be aware of good and bad neighborhoods

[Click to Return to the Brief](#)





# Potentially Dangerous Areas



[Click to Return to the Brief](#)